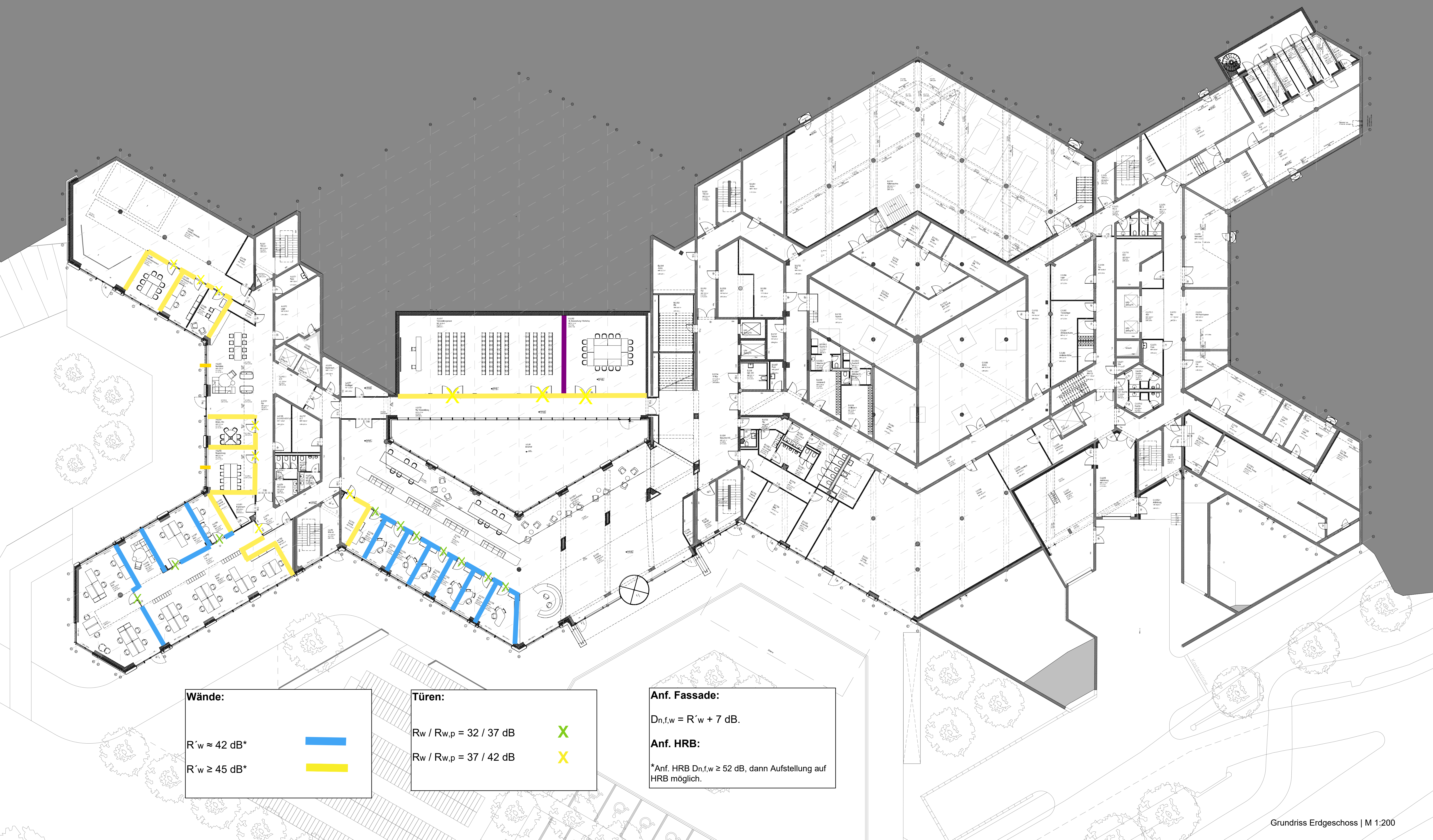




26.02.2025
ISRW





Wände:

$R'w \approx 42 \text{ dB}^*$ 

$R'w \geq 45 \text{ dB}^*$ 

Türen:

$Rw / Rw,p = 32 / 37 \text{ dB}$ 

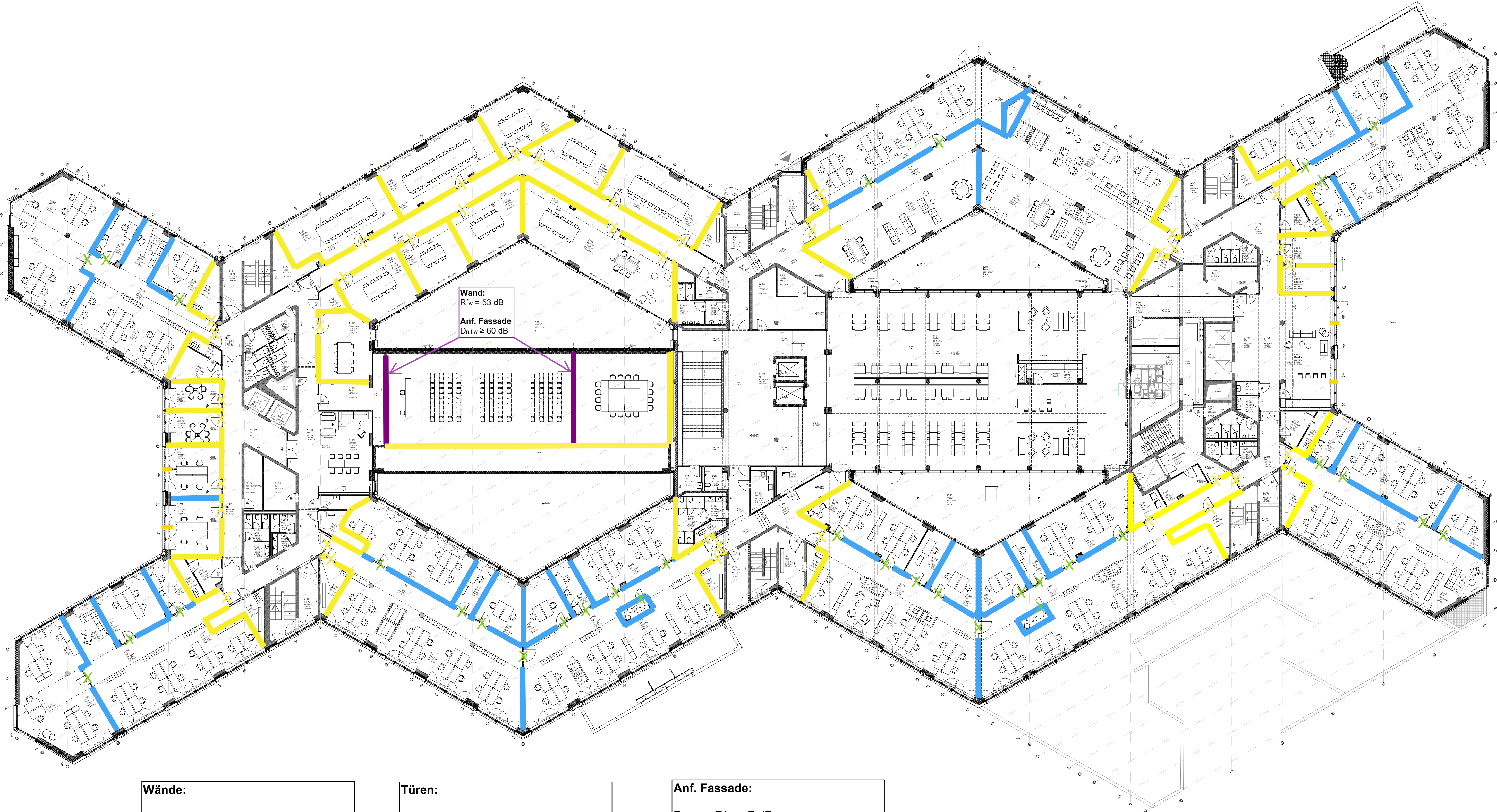
$Rw / Rw,p = 37 / 42 \text{ dB}$ 

Anf. Fassade:


$D_{n,f,w} = R'w + 7 \text{ dB}$.


Anf. HRB:

*Anf. HRB $D_{n,f,w} \geq 52 \text{ dB}$, dann Aufstellung auf HRB möglich.





Wände:

$R'w \approx 42 \text{ dB}^*$ 

$R'w \geq 45 \text{ dB}^*$ 

Türen:

$Rw / Rw,p = 32 / 37 \text{ dB}$ 

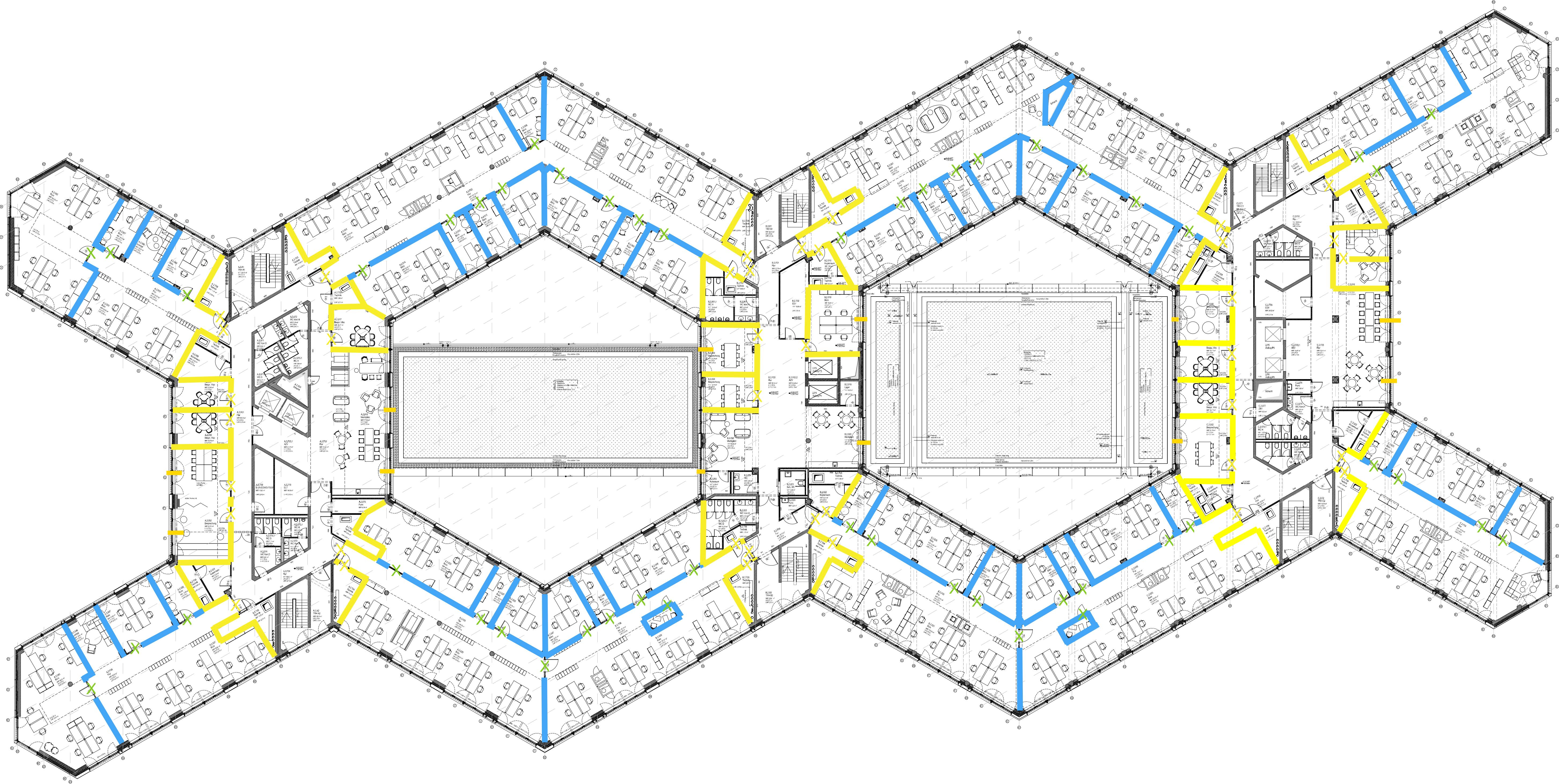
$Rw / Rw,p = 37 / 42 \text{ dB}$ 

Anf. Fassade:


$Dn,f,w = R'w + 7 \text{ dB}$.


Anf. HRB:

*Anf. HRB $Dn,f,w \geq 52 \text{ dB}$, dann Aufstellung auf HRB möglich.





Wände:

$R'w \approx 42 \text{ dB}^*$ 

$R'w \geq 45 \text{ dB}^*$ 

Türen:

$Rw / Rw,p = 32 / 37 \text{ dB}$ 

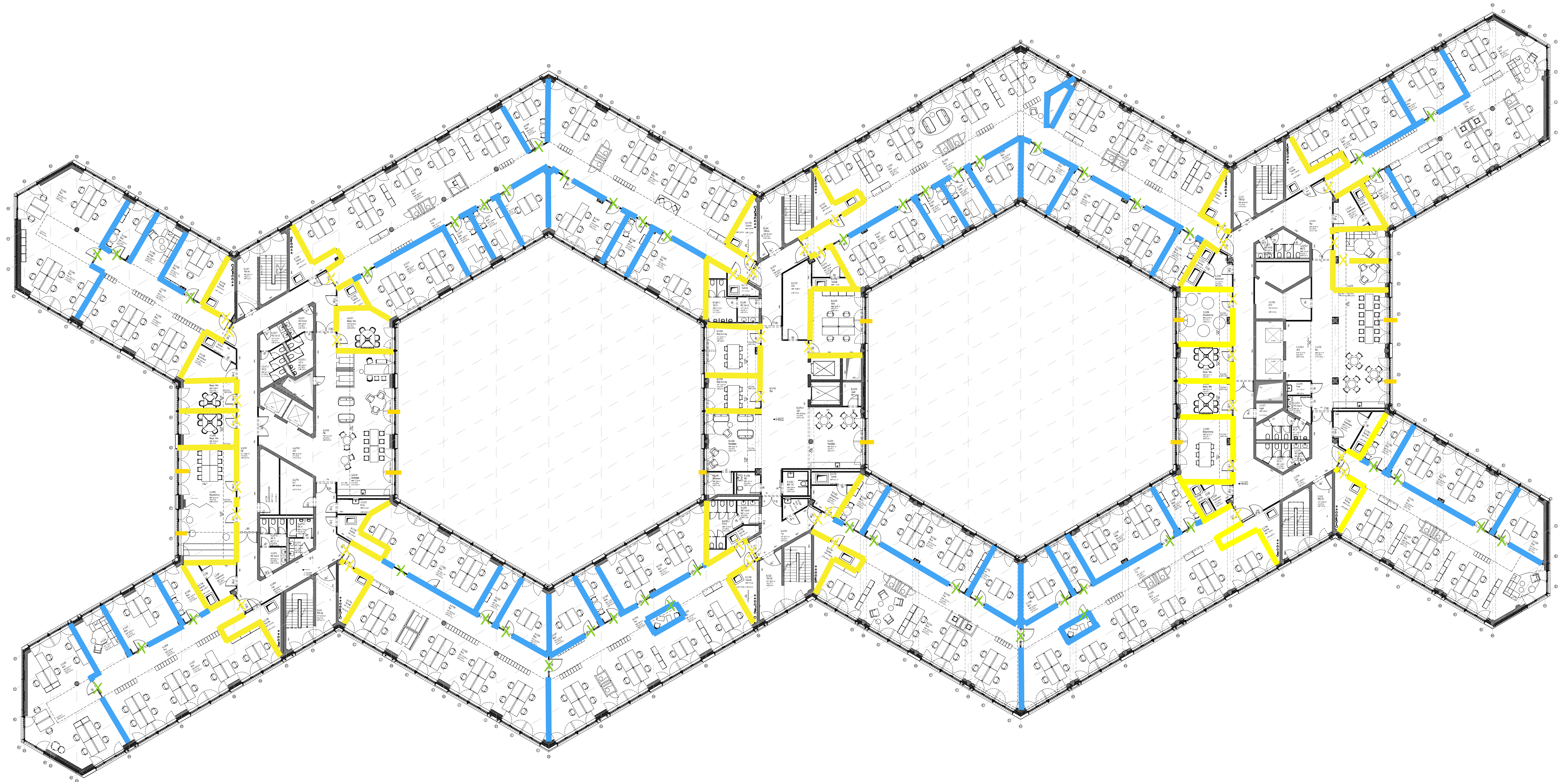
$Rw / Rw,p = 37 / 42 \text{ dB}$ 

Anf. Fassade:

$D_{n,f,w} = R'w + 7 \text{ dB}$.

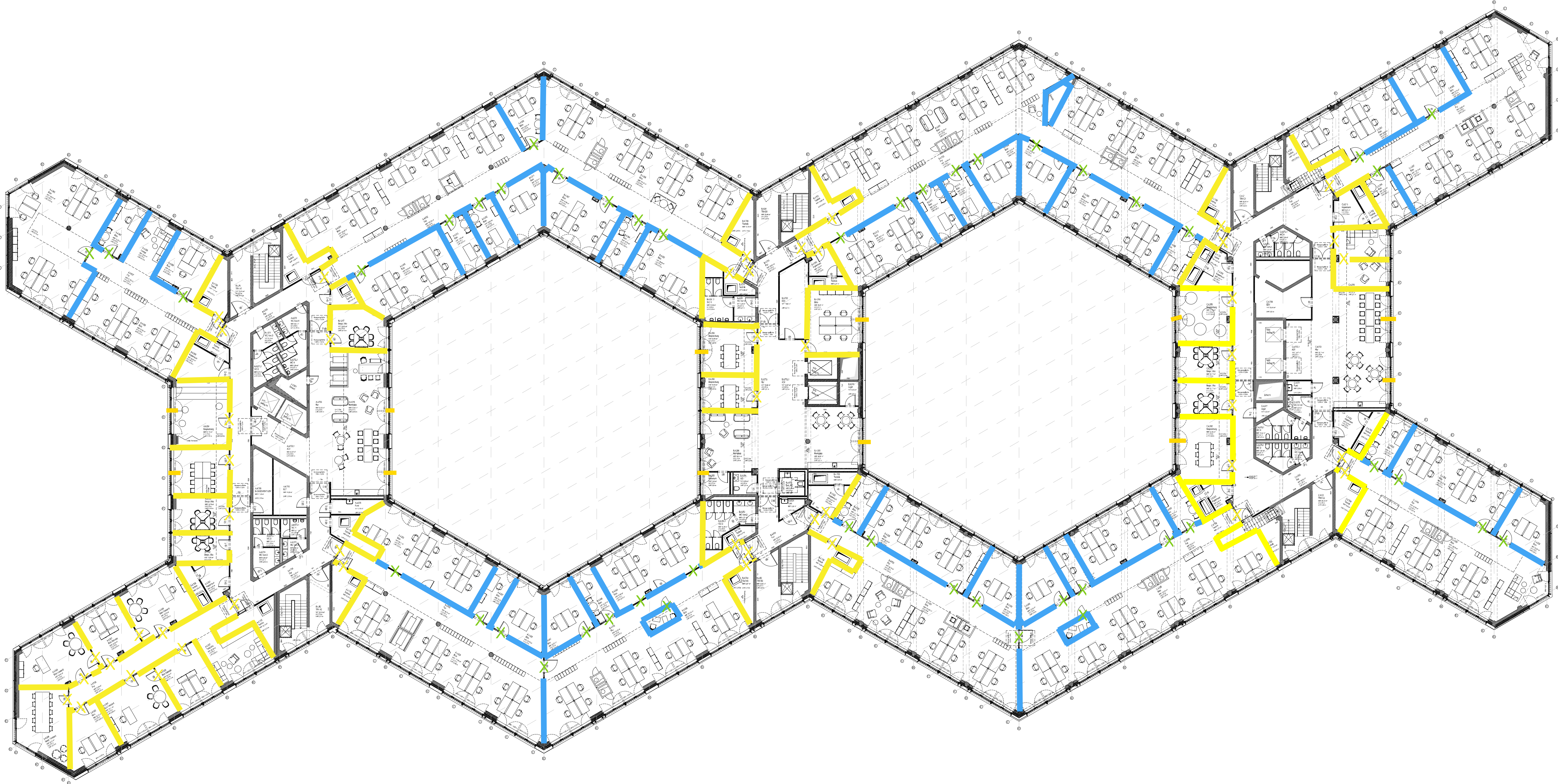
Anf. HRB:

*Anf. HRB $D_{n,f,w} \geq 52 \text{ dB}$, dann Aufstellung auf HRB möglich.





X

*Anf. HRB $D_{n,f,w} \geq 52$ dB, dann Aufstellung auf HRB möglich.





Wände:

$R'_{w} \approx 42 \text{ dB}^*$ 

$R'_{w} \geq 45 \text{ dB}^*$ 

Türen:

$R_w / R_{w,p} = 32 / 37 \text{ dB}$ 

$R_w / R_{w,p} = 37 / 42 \text{ dB}$ 

Anf. Fassade:

$D_{n,f,w} = R'_{w} + 7 \text{ dB}$.

Anf. HRB:

*Anf. HRB $D_{n,f,w} \geq 52 \text{ dB}$, dann Aufstellung auf HRB möglich.